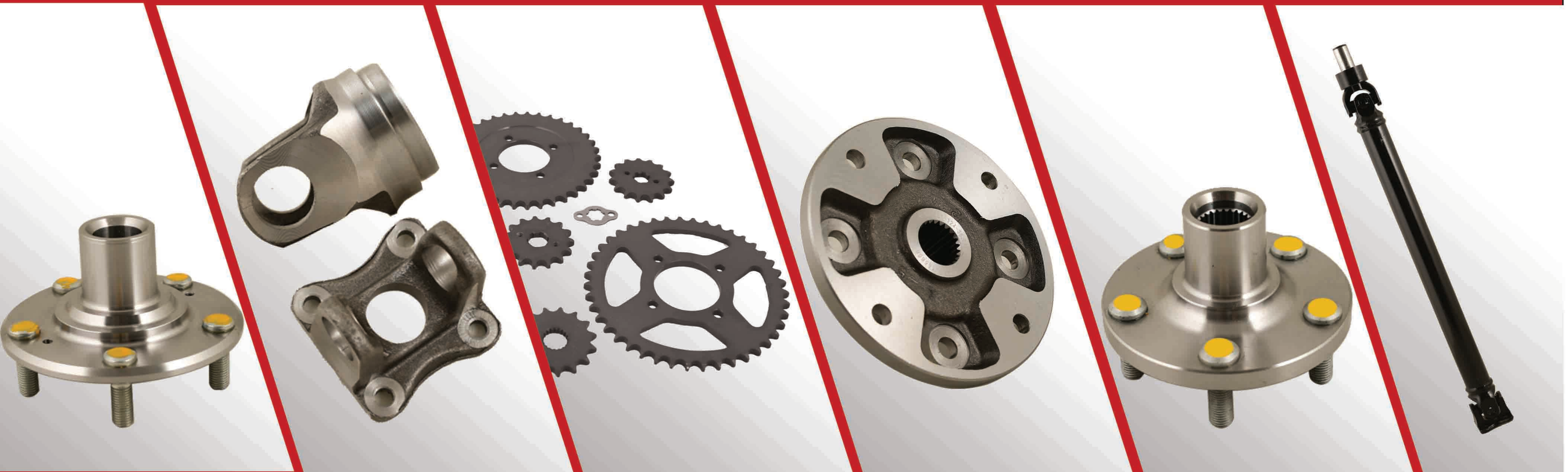


**NES**  
**ENGINEERING**



# Noor Engineering Services (Pvt.) Ltd.



# ABOUT US

Customer satisfaction is our company's primary objective. To attain this satisfaction, management as well as all partners are dedicated to follow the guidelines specified below:

- Continuous fulfillment of customer requirements and specifications,
- Customer oriented delivery period for all products at the required quality levels,
- Employment of highly motivated, well trained and flexible staff,
- Economical and quality ensuring cooperation with our suppliers,
- Development of new products, improvement of existing products,
- Use of all available resources for improvement and development.
- Adherence to TS 16949 Quality Management System (QMS) Requirements and any other regulatory and or statutory requirements.
- Bringing continual improvement in the implemented Quality Management System.

These quality guidelines are the basis for any strategic decision as well as for our partners everyday work. To this end, the guidelines are translated into concrete quality objectives.

In accordance with the above-mentioned principles, each partner is responsible for the quality of his work within the limits of his or her job. Supporting the necessary quality awareness is a permanent executive duty, as only motivated and well-trained partners can work with the right sense of responsibility and purpose.

All partners of NES are committed to carrying out and to respect the principles of this quality policy.

## OUR VISION

- Expand range of products by satisfying our customers through QCDM.
- Keep abreast with modern manufacturing techniques in both man & machine technologies.
- Continue to provide a motivating working environment for all partners.



# FOUR WHEELER PRODUCTS



# HUB FRONT WHEEL



**Honda Civic 2016**  
Hardness: HRC 15-25  
Specification: Vanadium Steel



**Honda City**  
Hardness: HRC 15-25  
Specification: Vanadium Steel



**Toyota Corolla**  
Hardness: HV 230-290  
Specification: Vanadium Steel

# HUB FRONT WHEEL



**Honda Civic**  
Hardness: HRC 15-25  
Specification: Vanadium  
Steel



**Suzuki Cultus**  
Hardness: HRC 20-30  
Specification: S48C



**Suzuki Mehran**  
Hardness: HRB 86-95  
Specification: AISI 1045

# CROSS JOINT FLANGES/YOKES & BOLT TWIN HOOK



**Suzuki Bolan/Ravi**  
Product Name: Cross Joint  
Flanges

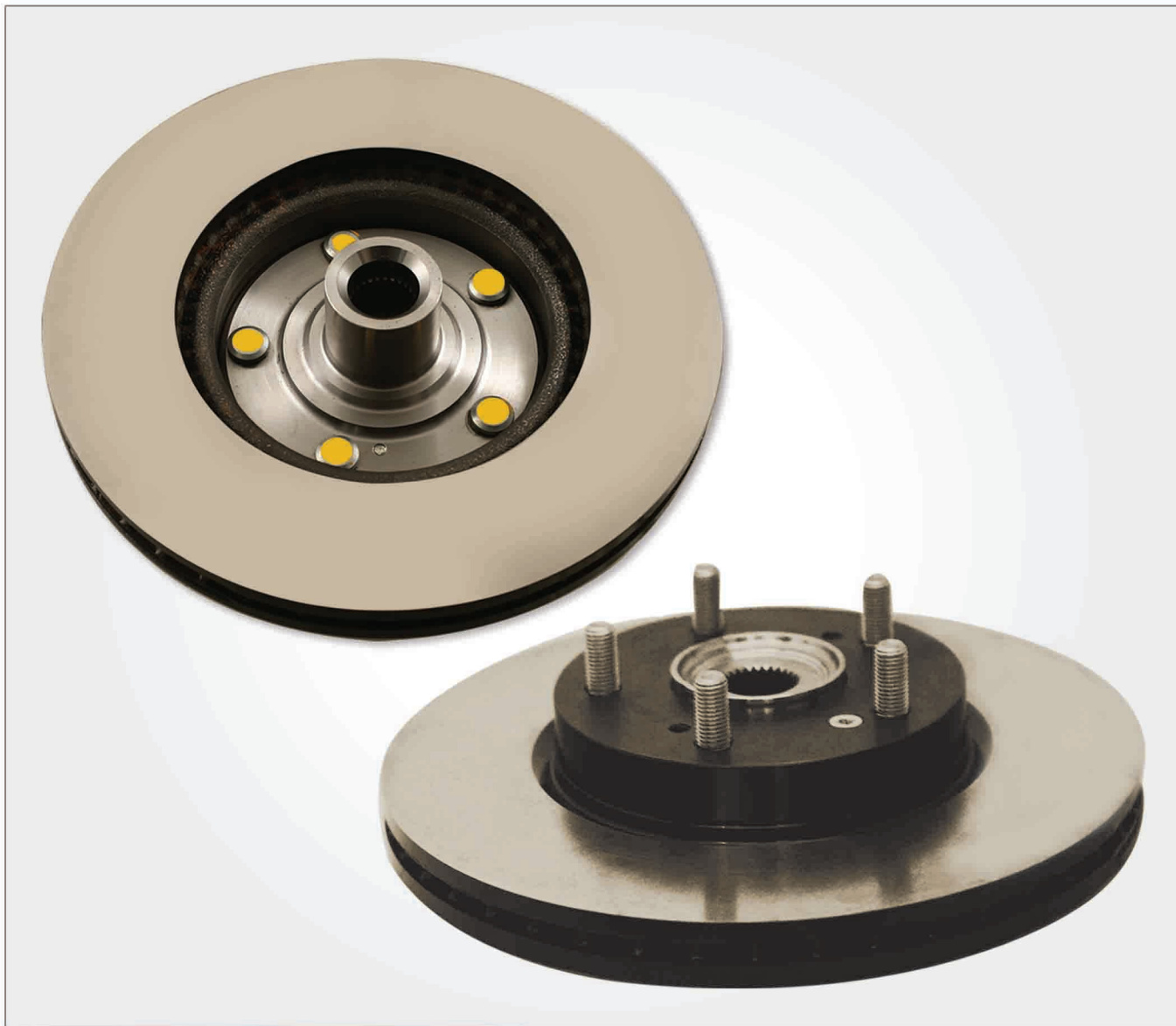


**Suzuki Bolan/Ravi**  
Product Name: Yoke Cross  
Joint



**Suzuki Swift**  
Product Name: Bolt Twin  
Hook

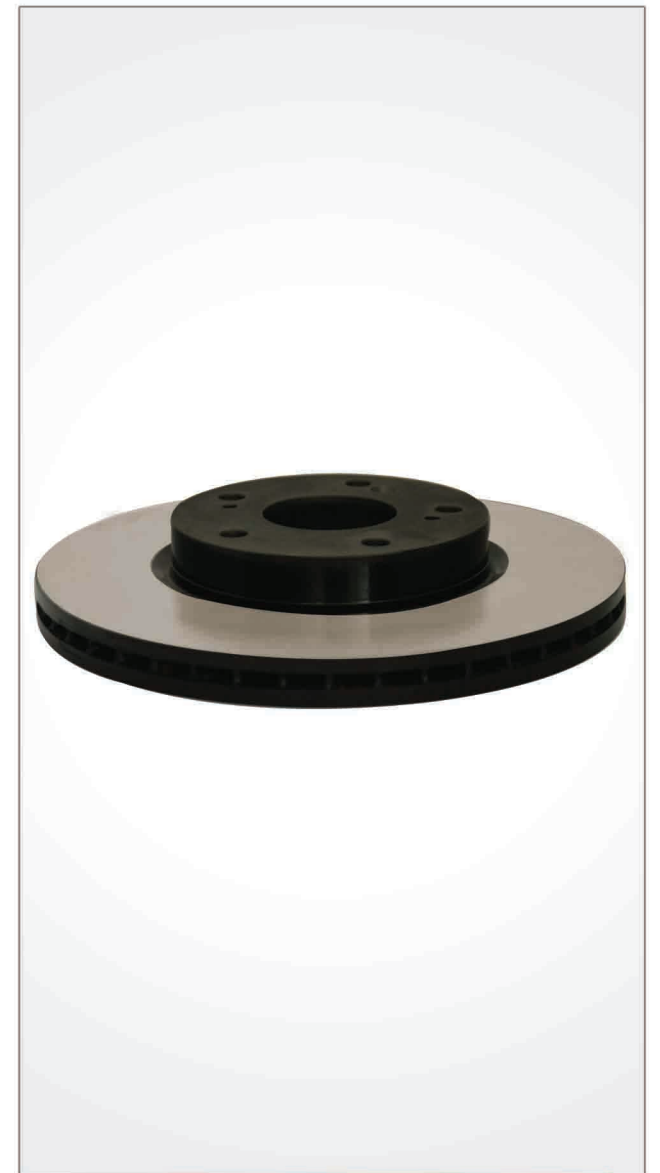
# HUB & DISC ASSEMBLY



**Honda Civic 2016**  
Product Name: Hub & Disc  
Assy



**Honda Civic 2016**  
Product name: Hub



**Honda Civic 2016**  
Product Name: Disc

# PROPELLER SHAFT & SHAFT COLUMN STEERING



**Suzuki Ravi/Bolan**  
Product name: Propeller Shaft



**Suzuki Mehran**  
Product name: Shaft Column  
Steering

# GEAR SHIFT LEVER



**Suzuki Swift**  
Product name: Gear Shift  
Lever Assy



**Suzuki Cultus**  
Product Name: Gear Shift  
Lever Assy

# GEAR SHIFT LEVER



**Suzuki Mehran**  
Product Name: Gear Shift  
Lever Assy



**Suzuki Bolan/Ravi**  
Product Name: Gear Shift  
Lever Assy

# COLUMN COMP STEERING



**Suzuki Mehran**  
Product name: Column  
Comp Steering



**Suzuki Bolan/Ravi**  
Product Name: Column  
Comp Steering

# TRAILING RODS & SHAFT COMP EXTENSIONS



**Suzuki Liana**  
Product name: Trailing Rods



**Suzuki Liana**  
Product name: Trailing Rods



**Suzuki Cultus**  
Product name: Rods & Shaft  
Comp extensions



# TWO WHEELER PRODUCTS

# REAR SPROCKET



**Honda CD-70**  
Product Name: Rear Sprocket



**Suzuki GS150**  
Product Name: Rear Sprocket



**Suzuki SD110**  
Product Name: Rear Sprocket

# SPROCKET DRIVE



**Honda CD-70**  
Product name: Sprocket  
Drive



**Honda CG-125**  
Product Name: Sprocket  
Drive

# SPROCKET DRIVE



**Honda GS-150**  
Product name: Sprocket  
Drive

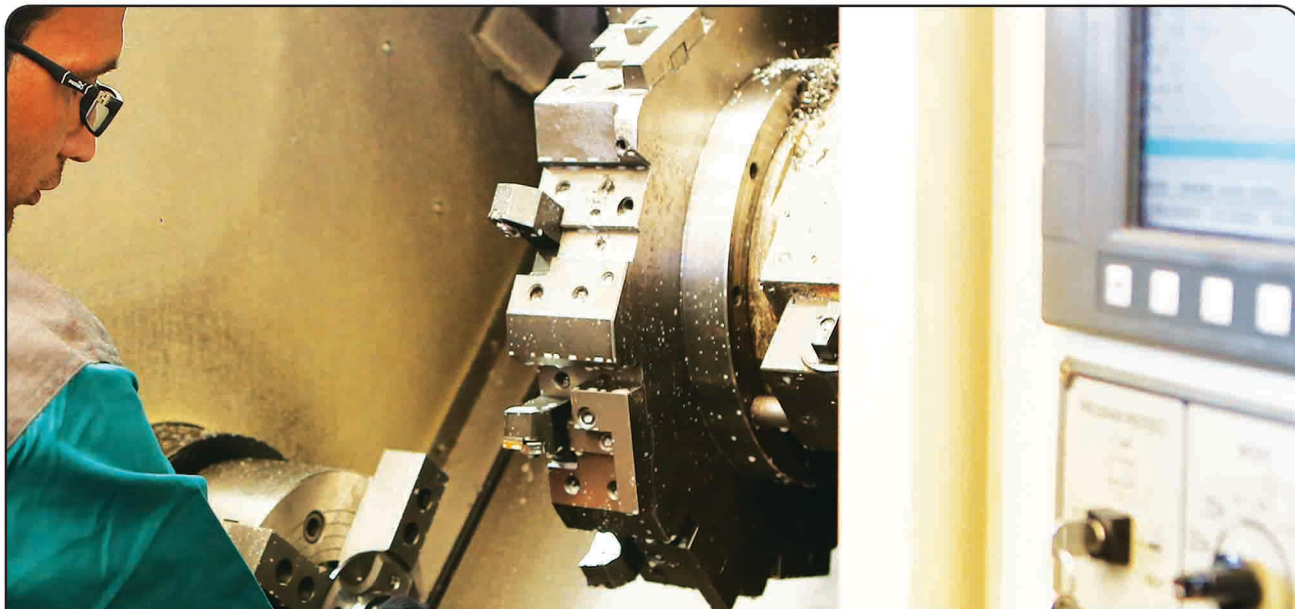


**Suzuki SD-110**  
Product name: Sprocket  
Drive

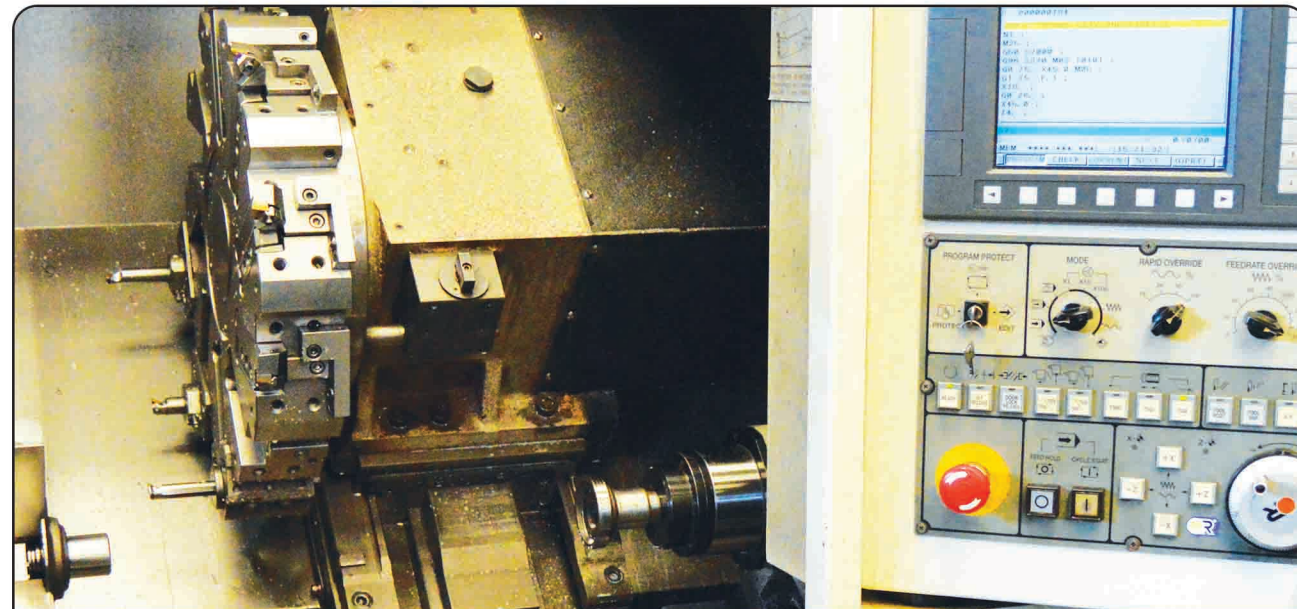


# OUR TECHNOLOGY

# TECHNOLOGY



**CNC Turning Facilities**  
Hub Front Wheel  
Specification: Horizontal C-Axis



**CNC Turning Facilities**  
Hub Front Wheel  
Specification: Horizontal

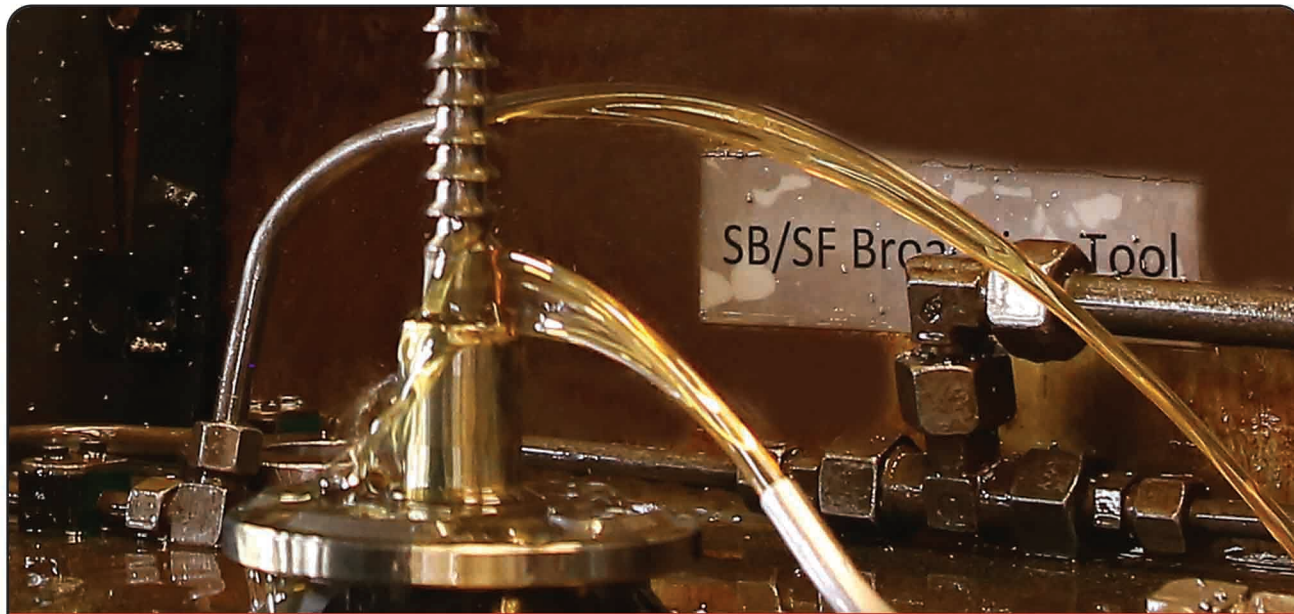


**CNC Turning Facilities**  
Hub & Disc Assy  
Specification: Vertical C- Axis



**CNC Turning Facilities**  
Hub & Disc Assy  
Specification: Vertical

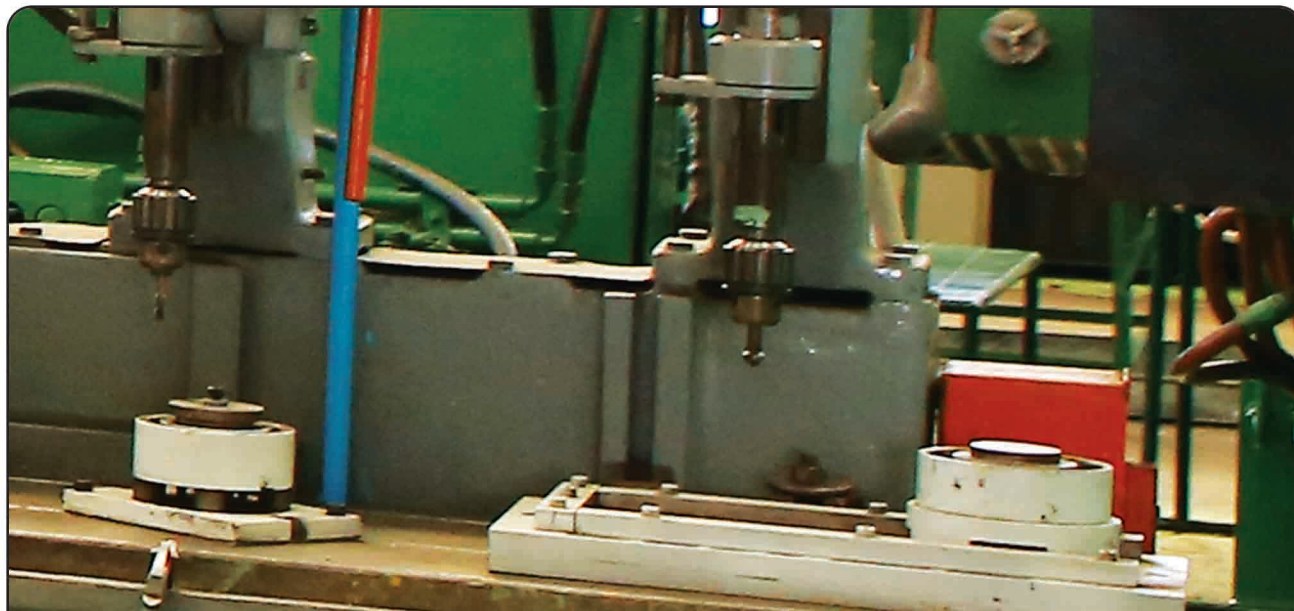
# TECHNOLOGY



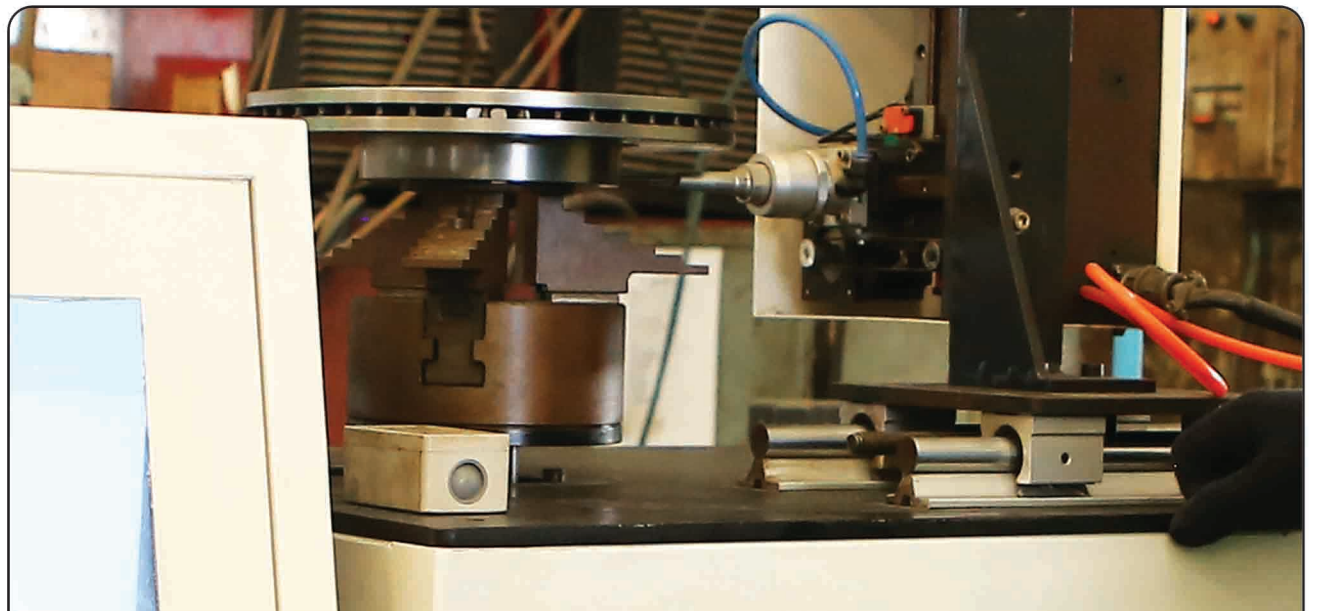
**Broaching Facilities**  
Hub Front Wheel  
Specification: Broaching Machine



**Marking Facilities**  
Hub & Disc Assy  
Specification: Traceability Marking Machines

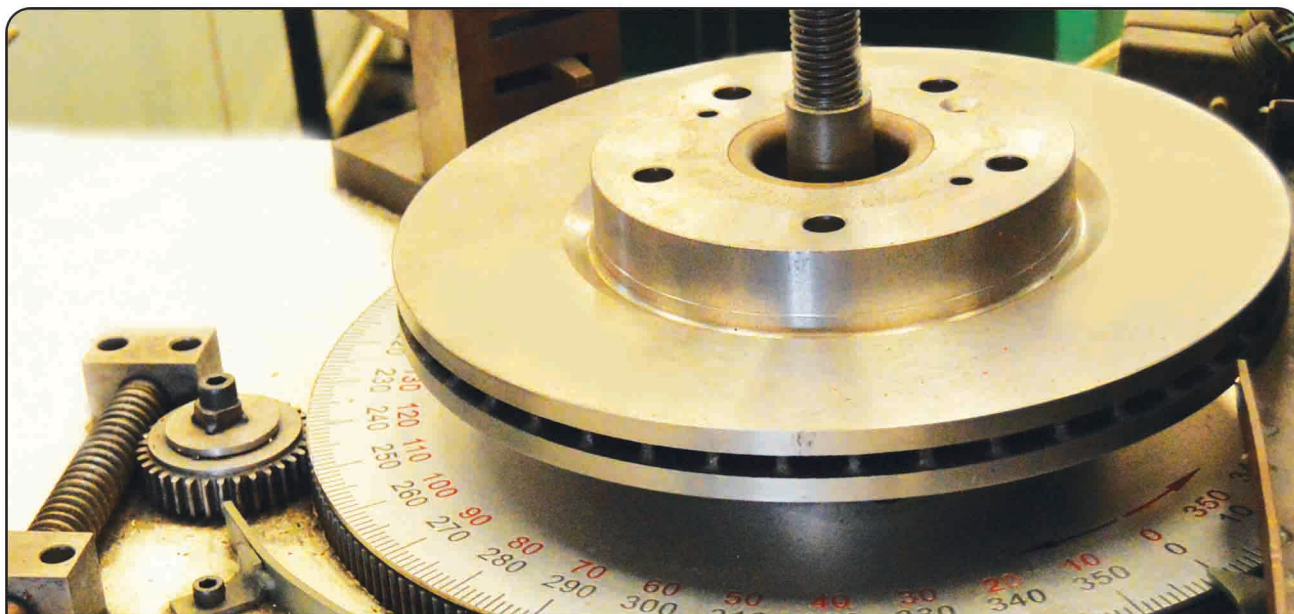


**Drilling Facilities**  
Hub & Disc Assy  
Specification: Gangue Drilling

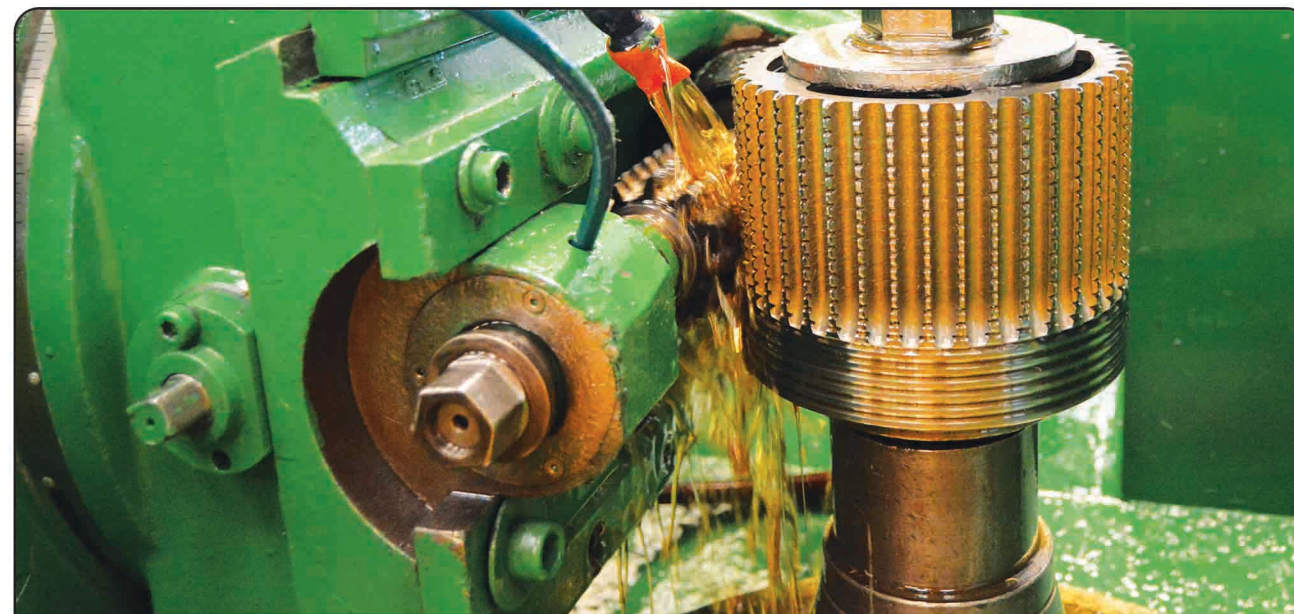


**Marking Facilities**  
Hub & Disc Assy  
Specification: Traceability Marking Machines

# TECHNOLOGY



**Balancing Facilities**  
Hub & Disc Assy  
Specification: Balancing Machines



**Hobbing Facilities**  
Rear Sprocket  
Specification: Hobbing

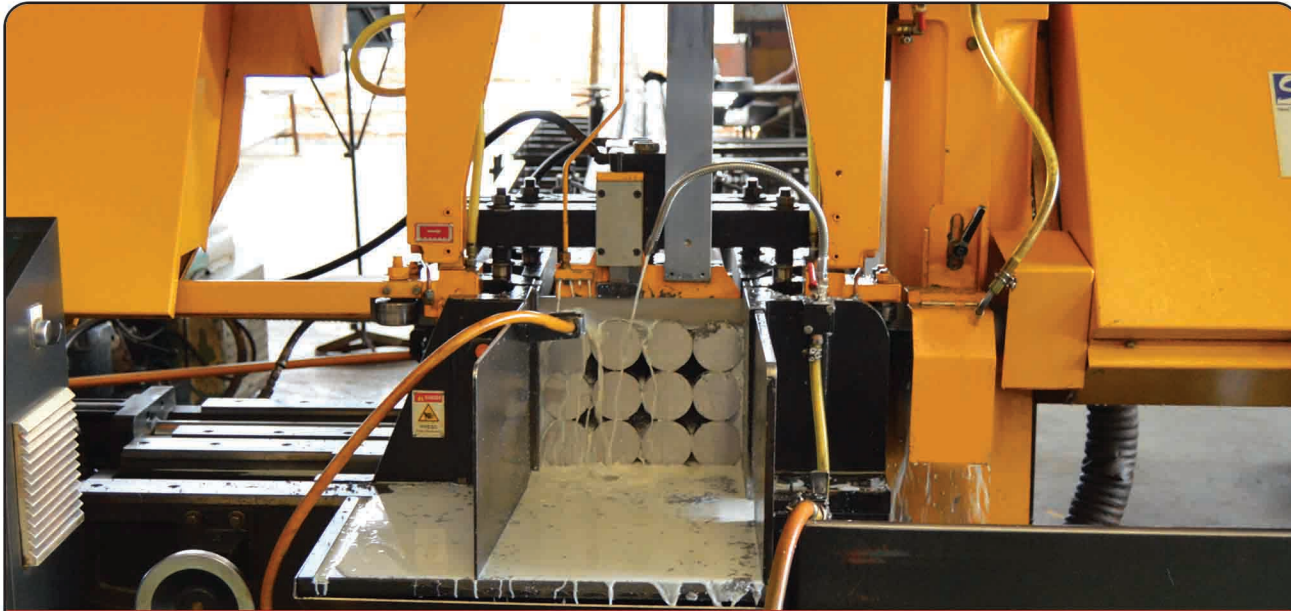


**Sheet Metal Facilities**  
Rear Sprocket  
Specification: Press



**Welding Facilities**  
Propeller Shaft  
Specification: Welding Machine

# TECHNOLOGY



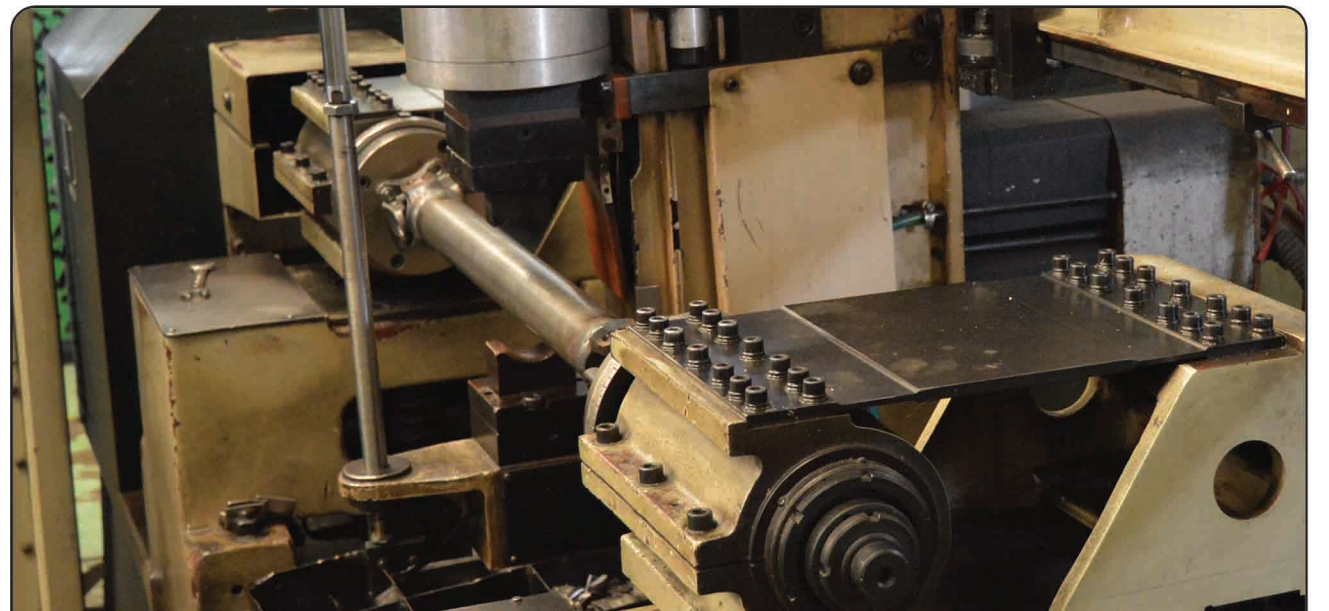
**Cutting Facilities**  
Sprocket Drive  
Specification: Mechanical Hacksaw



**Machining Facilities**  
Hub Front Wheel  
Specification: CNC Milling



**Propeller shaft**  
Specification: Bearing Fitting press



**Balancing Facilities**  
Propeller Shaft  
Specification: Schenck's Balancing Machine

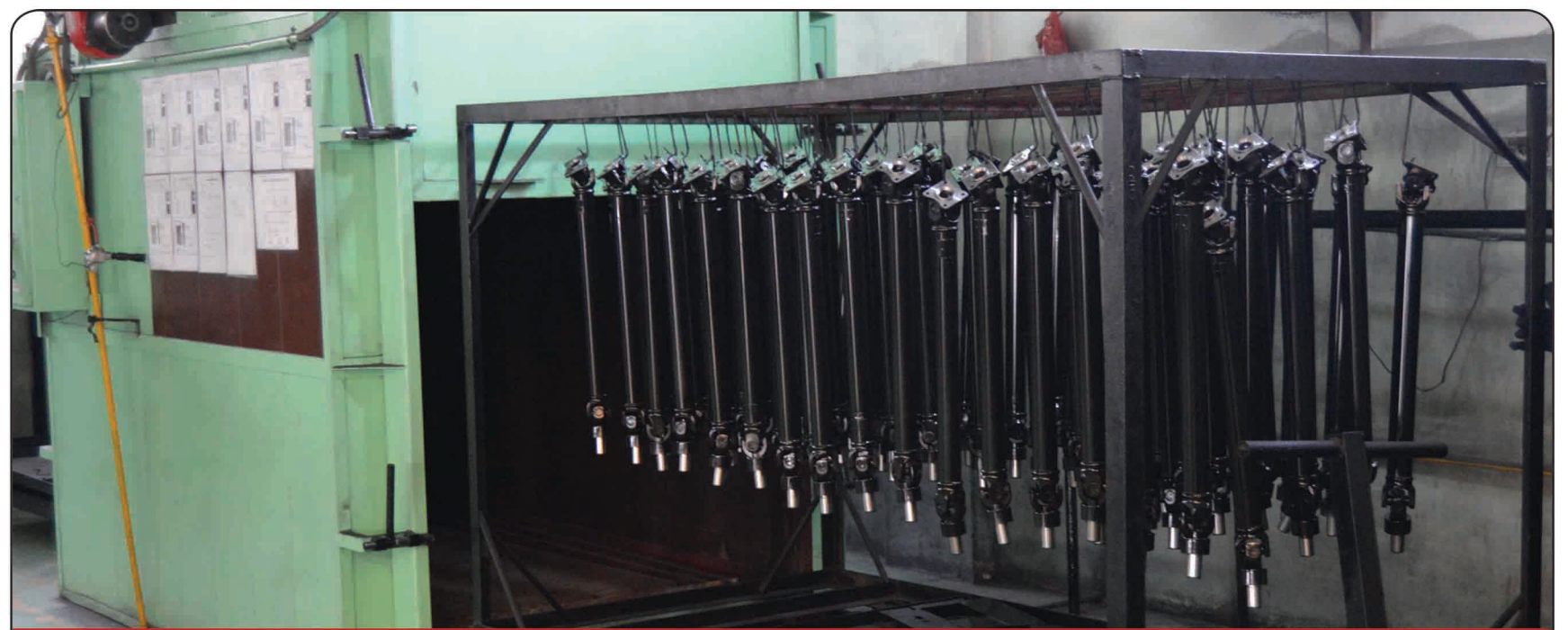
# TECHNOLOGY



Painting Facilities  
Paint Shop  
Specification: Painting



Painting Facilities  
Paint Shop  
Specification: Painting



Painting Facilities  
Paint Shop  
Specification: Painting

# HISTORY & ACHIEVEMENTS

## 2016

### NEW DEVELOPMENT

- Plan to Start commercial production of Brake Disk Assy manufacturing of 2SV for HACPL. (Apr, 16)
- Plan to Start commercial production of Gear Shift Cont. Lever of YN-3 for Pak Suzuki. (Jun, 16)

### ACHIEVEMENTS & AWARDS

- Capacity Enhancement up to 50 %

## 2015

### ACHIEVEMENTS & AWARDS

- Hub Front wheel Rotary Bending Test passed for HONDA 2SV.

## 2014

### ACHIEVEMENTS & AWARDS

- Quality Award by Pak Suzuki in Recognition of Outstanding Quality Performance

## 2013

### NEW DEVELOPMENT

- Started Hub Front Wheel manufacturing of Civic & City for HACPL.

### ACHIEVEMENTS & AWARDS

- Vendor Appreciation Award by Pak Suzuki for achieving good quality of components
- Hub Front wheel Rotary Bending Test passed for HONDA 2HC & 2PK.

## 2012

### NEW DEVELOPMENT

- Signed TAA with HAMANA PARTS MANUFACTURE CO., LTD., Japan

### ACHIEVEMENTS & AWARDS

- Vendor Appreciation Award by Pak Suzuki for achieving good quality of components

## 2011

### NEW DEVELOPMENT

- Started Engine & Rear Sprockets manufacturing for Atlas Honda OEM & SPD Division.

### ACHIEVEMENTS & AWARDS

- Vendor Appreciation Award by Pak Suzuki for achieving good quality of components



# HISTORY & ACHIEVEMENTS

## 2010

### NEW DEVELOPMENT

- Started Column Comp Steering parts manufacturing of SB & ST for Pak Suzuki.

### ACHIEVEMENTS & AWARDS

- Best Vendor Performance award by Pak Suzuki.

## 2009

### NEW DEVELOPMENT

- Started Engine & Rear Sprockets manufacturing for Pak Suzuki MCD.

### ACHIEVEMENTS & AWARDS

- Shifted Plant from Korangi to Port Qasim

## 2008

### NEW DEVELOPMENT

- Started Engine & Rear Sprockets manufacturing for Pak Suzuki MCD.

### ACHIEVEMENTS & AWARDS

- Best Vendor Performance award by Pak Suzuki.
- Best Quality award (Zero PPM) by Toyota Motor Company

## 2007

### NEW DEVELOPMENT

Started Gear Shift Control lever manufacturing of RH-413 for Pak Suzuki.

### ACHIEVEMENTS & AWARDS

- Best Vendor Performance award by Pak Suzuki.
- Vendor Performance Award by Toyota Motor Company

## 2006

### NEW DEVELOPMENT

- Started Hub Front Axle manufacturing of Coure for Indus Motor Company.

### ACHIEVEMENTS & AWARDS

- 100% Timely Supply of Components by Pak Suzuki.
- Best quality award by Dewan Farooque Motors



# HISTORY & ACHIEVEMENTS

**2005**

**NEW DEVELOPMENT**

- Started Hub Front Axle manufacturing of SB-308 & SF-410 for Pak Suzuki.

**ACHIEVEMENTS & AWARDS**

- 100% Timely Supply of Components by Pak Suzuki.
- Best quality award by Dewan Farooque Motors

**2003**

**NEW DEVELOPMENT**

- Started Hub Front Axle manufacturing of Toyota Corolla.

**2002**

**ACHIEVEMENTS & AWARDS**

- Conferred Vendor Performance Award by Dewan Farooque Motors

**2001**

**ACHIEVEMENTS & AWARDS**

- Conferred Vendor Performance Award and Mehran Revival Award by Pak Suzuki

**1998**

**NEW DEVELOPMENT**

- Started Gear Shift Control lever manufacturing of ST-308 & SB-308

**1997**

**NEW DEVELOPMENT**

- Signed TAA with HAMANA PARTS MANUFACTURE CO., LTD., Japan

**1996**

**NEW DEVELOPMENT**

- Started Propeller shaft manufacturing of Shehzore Truck

**ACHIEVEMENTS & AWARDS**

- Conferred Vendor Performance Award by Pak Suzuki



# HISTORY & ACHIEVEMENTS

**1995**

NEW DEVELOPMENT

- Started Propeller shaft manufacturing of SJ-410 (Jeep 4×4)

ACHIEVEMENTS & AWARDS

- Conferred Vendor Performance Award by Pak Suzuki

**1992**

NEW DEVELOPMENT

- Started Propeller shaft manufacturing of ST-308 (Van/pickup)

**1991**

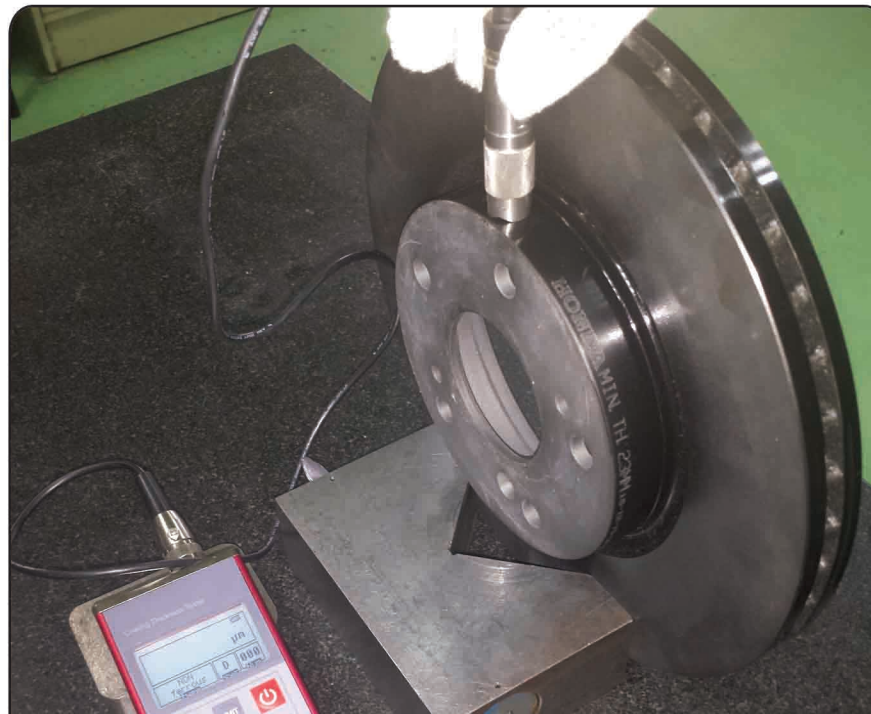
- NES Established



# QC FACILITIES



Hardness Tester



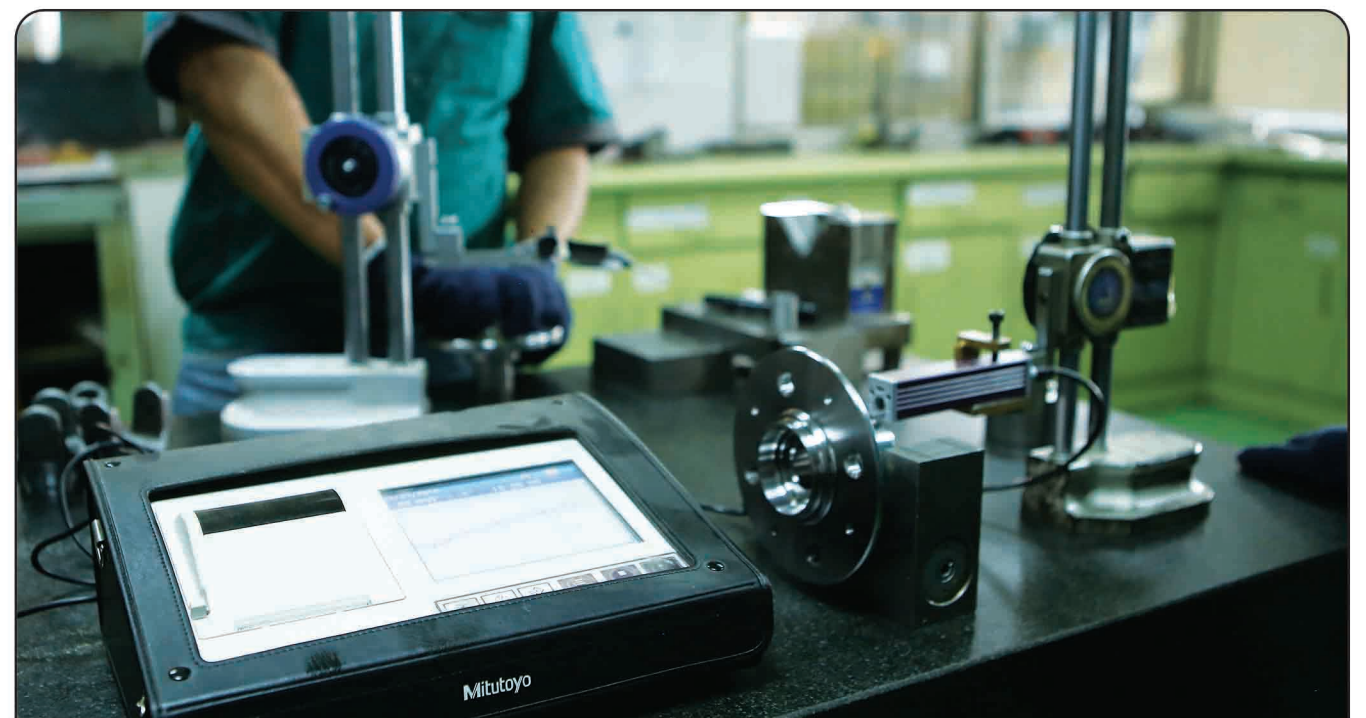
Paint Thickness Checker



Endurance Testing Equipment

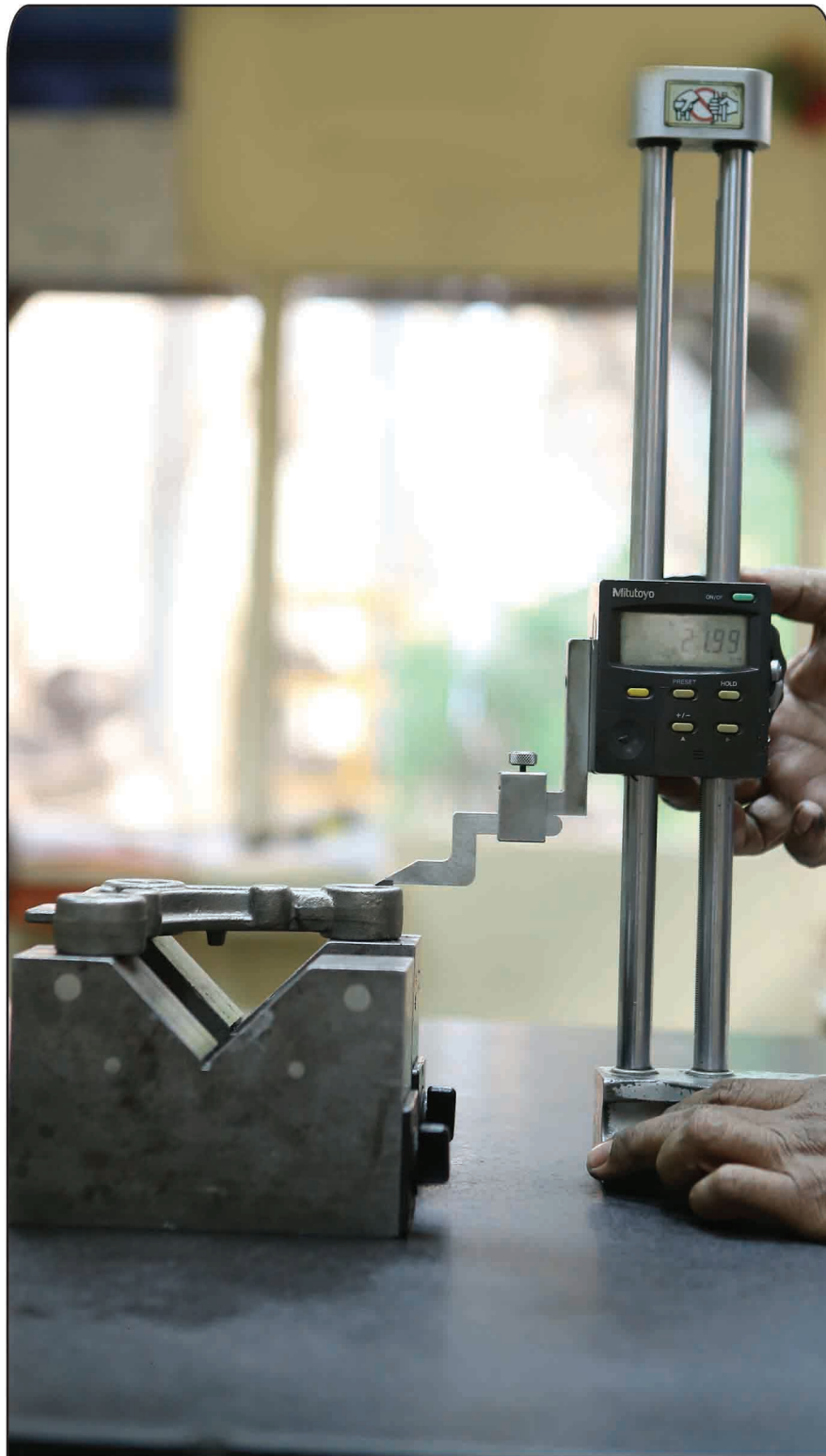


Checking Instruments  
Measurement



Surface Roughness Tester  
Surface Tester

# QC FACILITIES



Height Gauge  
Measurement



Coordinate Measuring Machine  
Measurement



Checking Fixture  
Measurement



Hub Checking Equipment  
Measurement

# RESEARCH & DEVELOPMENT



- Deburring Machine
- Wire Cut Machine
- Cylindrical Grinding Machine

## Software Used:

- Pro E
- Mechanical desktop

- Surface Grinding Machine
- CNC Machining Center

- Master Cam

- EDM
- Heat Treatment

- AutoCad

# OUR CUSTOMERS



## **Noor Engineering Services**

Plot # DSU 32/3 & 32/10, Downstream Industrial Estate, Bin  
Qasim, Karachi, Pakistan

Tel: (92-21)34723580 | Fax: (92-21)34723582

Email: [info@nes.com.pk](mailto:info@nes.com.pk)

Web: [www.nes.com.pk](http://www.nes.com.pk)